



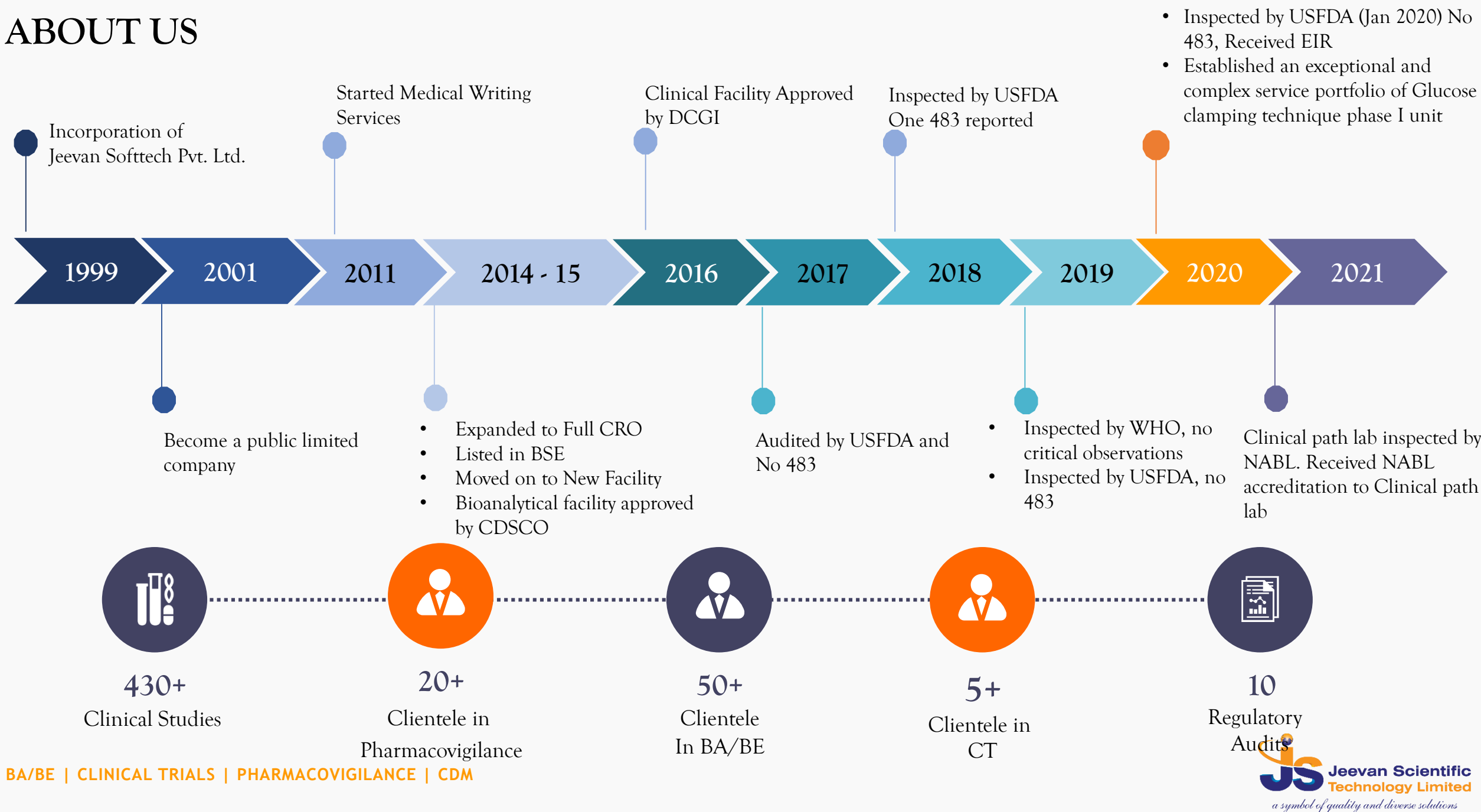
Jeevan Scientific Technology Limited

a symbol of quality and diverse solutions

Plot No. 1&2, Sai Krupa Enclave, Near LANCO Hills, Golconda post, Hyderabad - 500 008, India.

☎ +91-40-6736 4700 | ✉ info@jeevanscientific.com | 🌐 www.jeevanscientific.com

ABOUT US



MISSION, VISION, VALUES, QUALITY POLICY

VISION

To be an integrated CRO with global distinction aiming for long-term partnership with our customers based on shared beliefs and goals for synergistic growth.

QUALITY POLICY

To ensure our services adhere to the highest standards which are at par with global quality standards and setting new global benchmarks



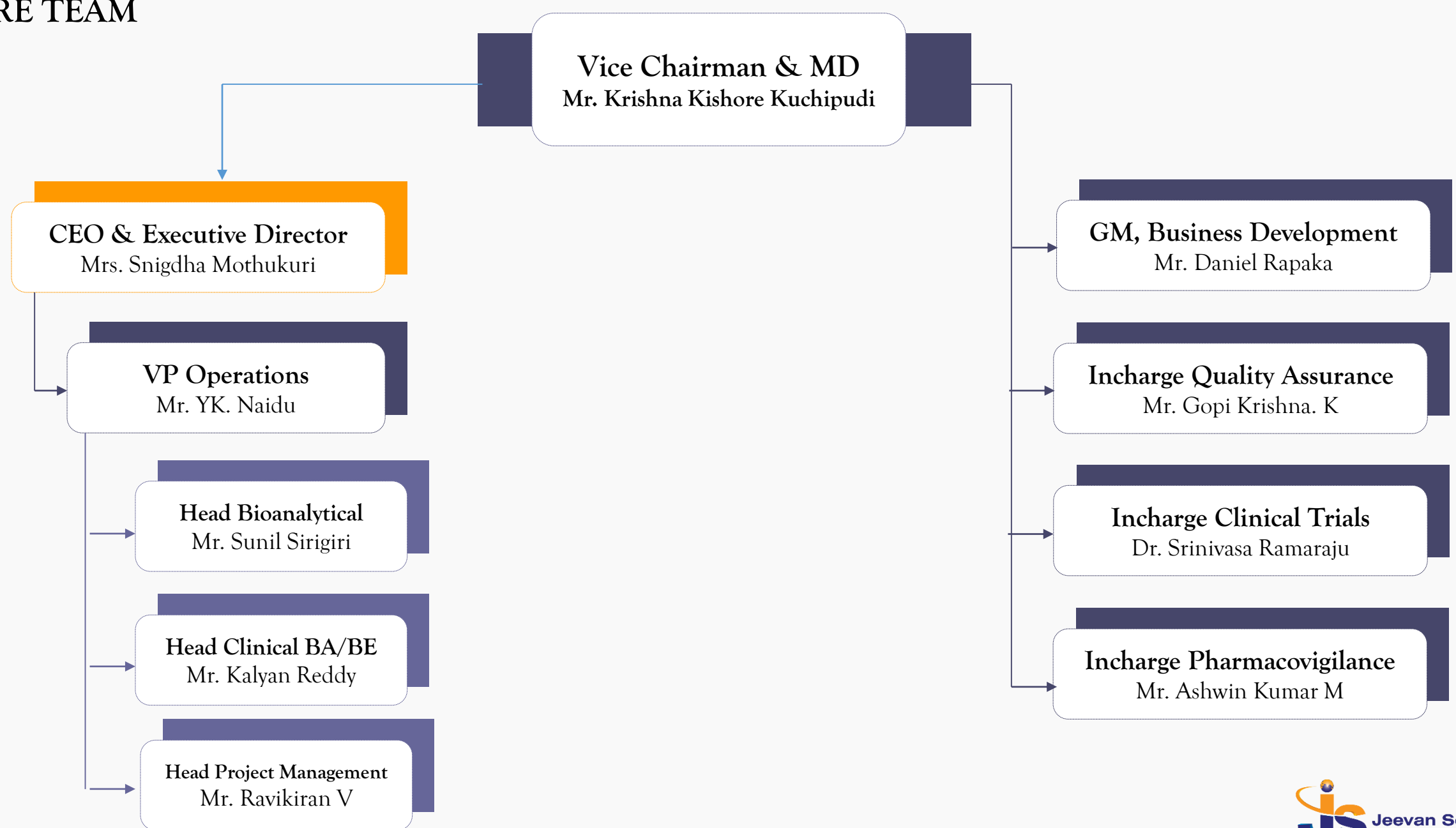
MISSION

To deliver value added, reliable and cost effective services to our customers.

VALUES

Quality, Team work, Accountability, Innovation, Initiative and Integrity

CORE TEAM



SERVICE PORTFOLIO

CLINICAL DEVELOPMENT

- Healthy Subjects BA/BE
- Mixed Gender Studies
- PK studies
- Drug-Drug Interaction Studies
- Glucose Clamping Studies

- Patient based BA/BE
- PK/PD Studies
- Early & Late Phase Clinical Trials
- Cosmetic Clinical Trials
- Vaccine Clinical Trials
- PMS and Observational studies
- Clinical Trial Management

BA/BE

- Case processing
- Aggregate reports
- Signal detection
- Risk management plans
- Medical information call centre

PHARMACOVIGILANCE

- Clinical Data Management
- Electronic Data Capture (EDC)
- SAS and WinNonlin

CLINICAL DATA MANAGEMENT

CLINICAL FACILITY

4 CPUs

3rd Floor: CPU I- 42 Beds, CPU II – 24 beds

2nd Floor: CPU III- 42 Beds, CPU IV – 24 beds

Inspected by USFDA, WHO and CDSCO

20,000 Sq.ft facility

4 CPUs, 132 bed capacity

2 Special care units, 3 beds in each unit

Pharmacy Walk-in chamber

Bio-medical freezers (-70°C and -25°C)

Dedicated ambulance & Tie up with tertiary care hospitals

NABL Accredited in house clinical path lab

4th Floor-Screening area, Work space. 3rd Floor- CPU 1 & 2

2nd Floor -CPU 3 & 4. Ground Floor- Stores and Security

CORPORATE / ANALYTICAL FACILITY

20,000 Sq.ft Independent facility

1st Floor: Bioanalytical laboratory

Bioanalytical laboratory- Temp. controlled area, Provisions for handling light sensitive molecule.

ELISA for analysis of large molecules

2nd Floor: Pharmacovigilance, QA, Central Archival and IT

3rd Floor: Admin

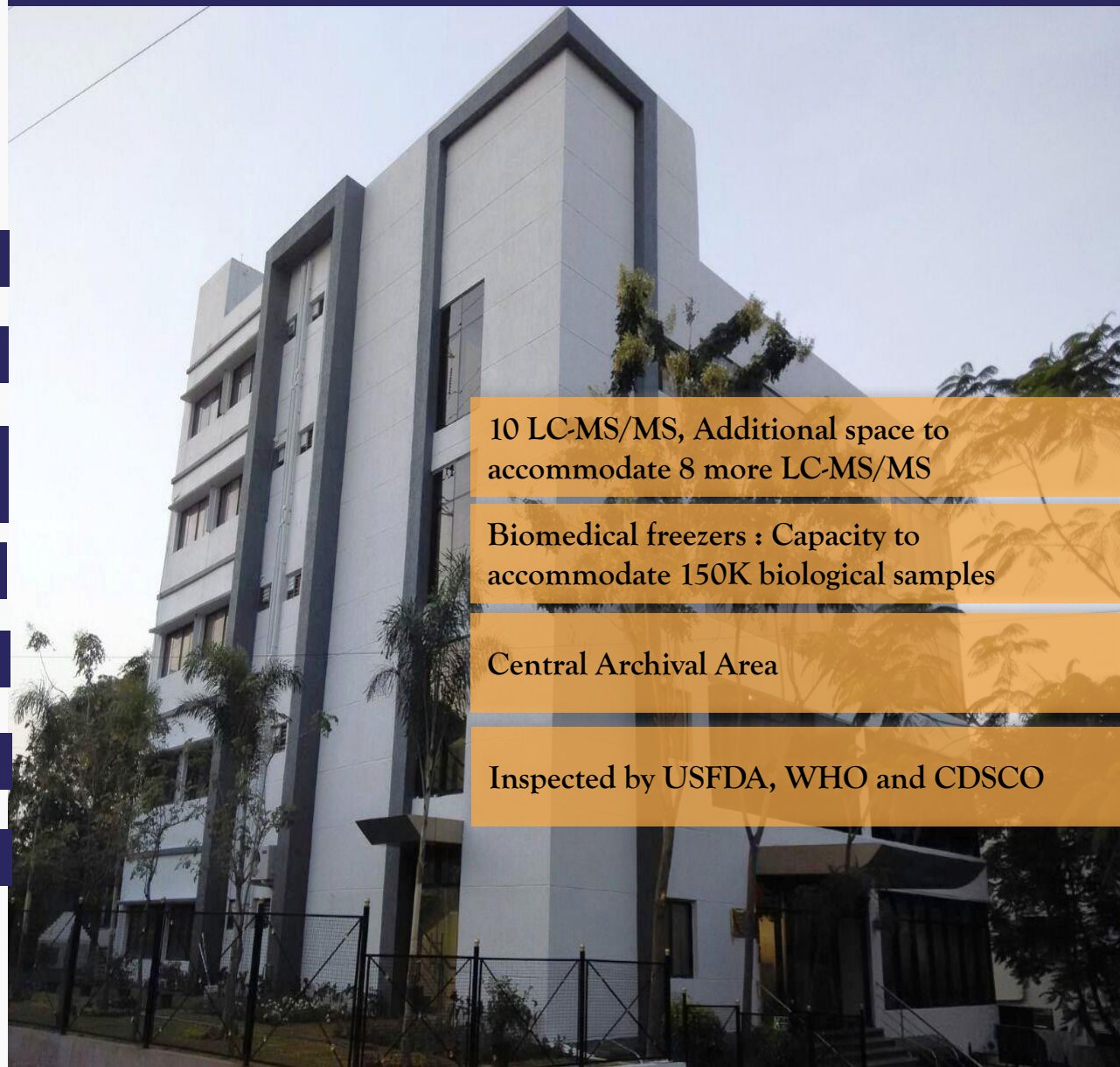
4th Floor: Extended facility for archival area and deep-freezers. Cafeteria

10 LC-MS/MS, Additional space to accommodate 8 more LC-MS/MS

Biomedical freezers : Capacity to accommodate 150K biological samples

Central Archival Area

Inspected by USFDA, WHO and CDSCO



GLUCOSE CLAMPING STUDIES

Glucose clamp technique is a method for quantifying insulin secretion and resistance. It is used to measure either how well an individual metabolizes glucose or how sensitive an individual is to insulin. Our team has hands on experience in designing and executing the glucose clamping studies.

SERVICES



EXECUTION OF CLAMP
TECHNIQUES

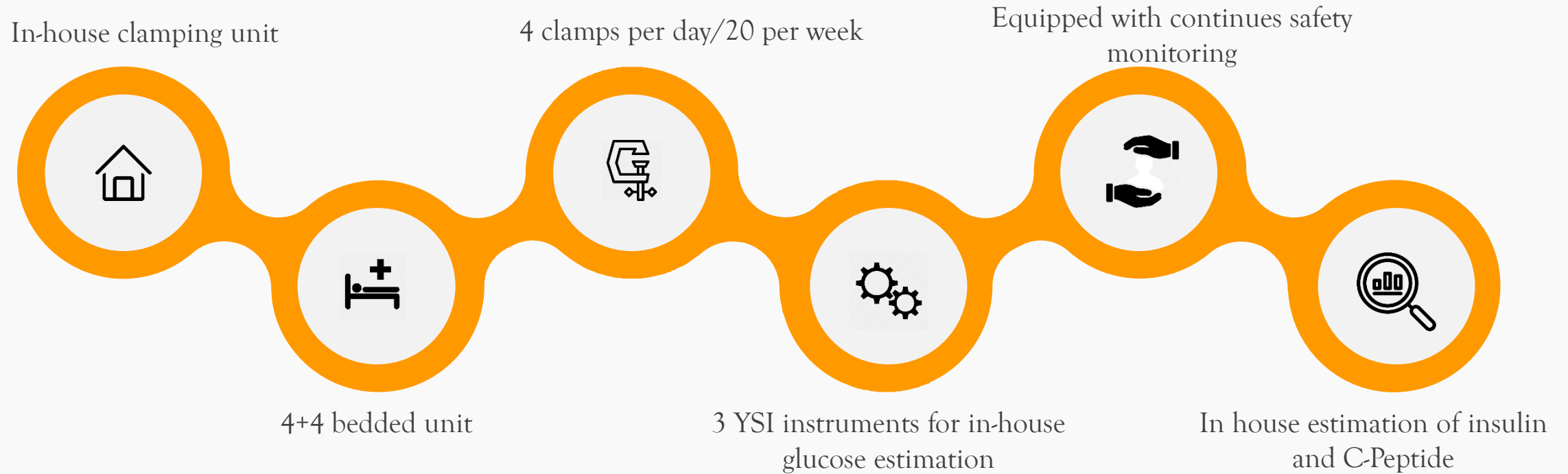


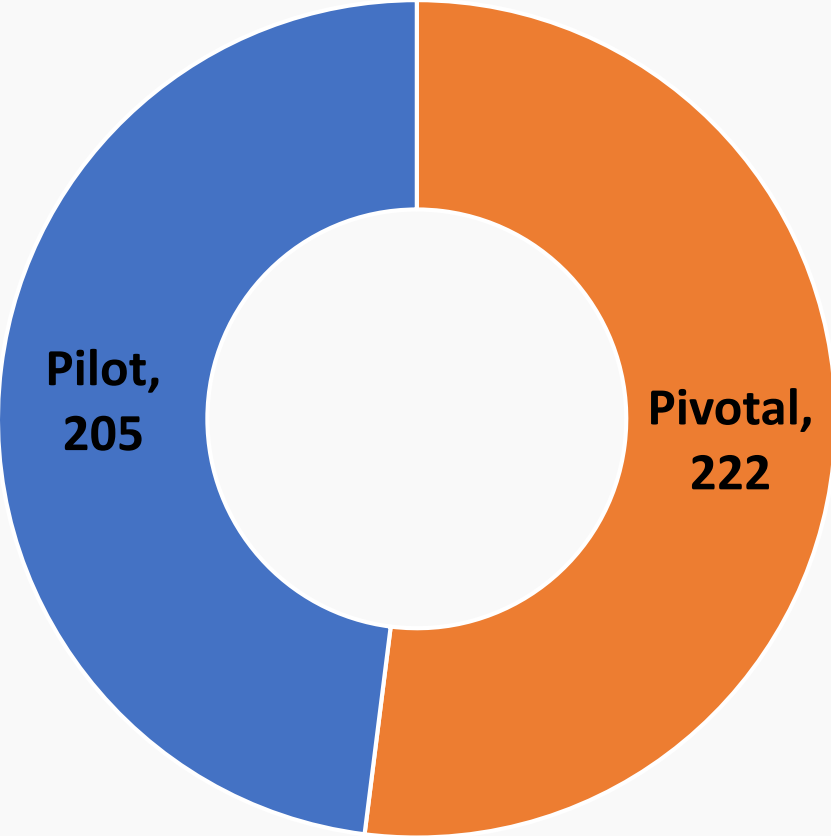
CLAMP DATA
ANALYSIS



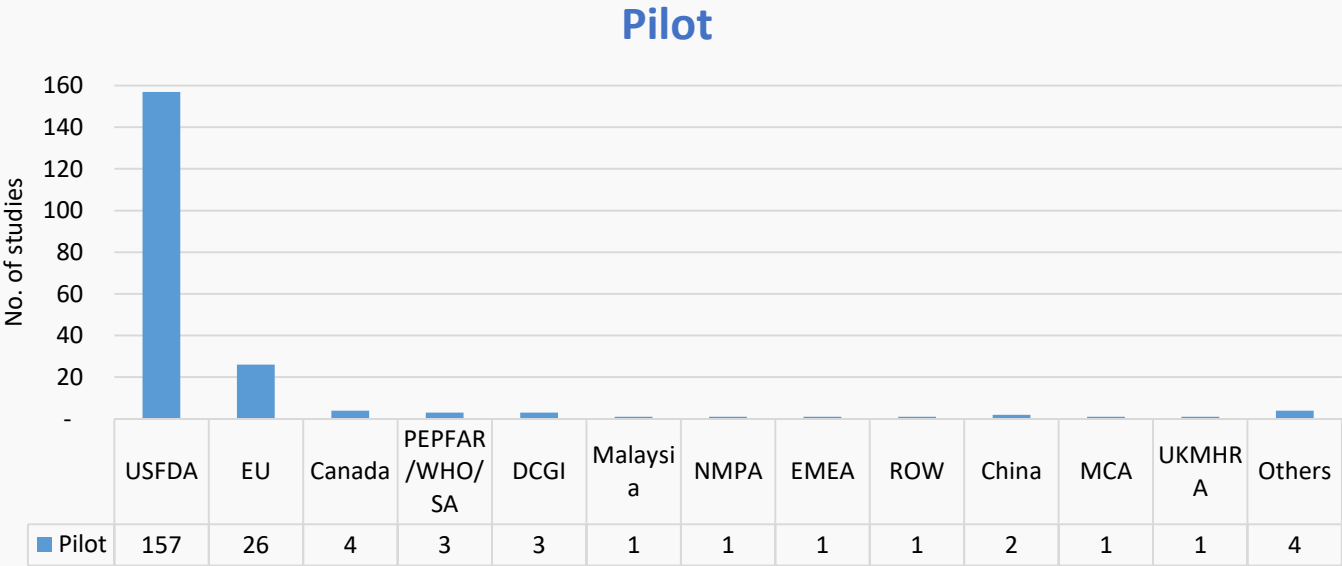
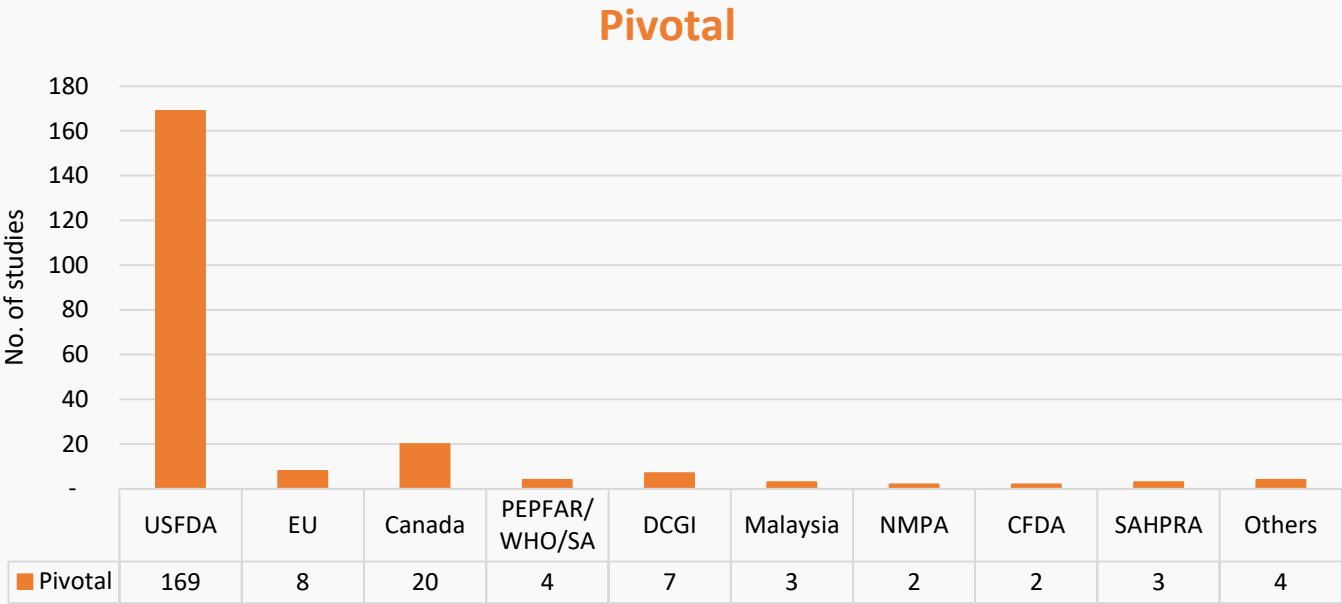
BE STUDIES WITH
CLAMPING TECHNIQUE

GLUCOSE CLAMPING STUDIES - CAPABILITIES





No. of studies



TEAM STRENGTHS

01 Leadership team played active part in most start-up CROs in India



02 Experience in handling nearly 50 Global regulatory audits



03 Experience in handling more than 2000 projects from various therapeutic areas



04 Management team has 15 years experience in respective areas of work



05

Working experience with top pharma clients



06

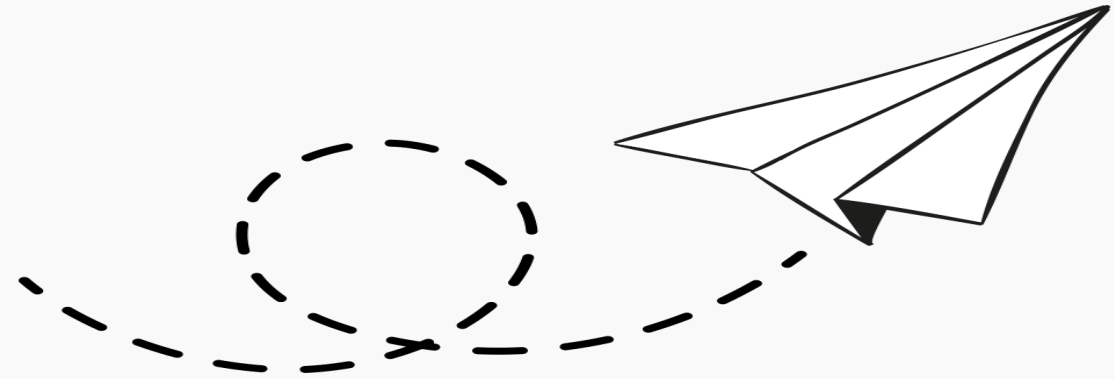
Experienced project managers having experience in handling Global projects



INSPECTION HISTORY

Regulatory Authority	Year of inspection	Outcome
NABL	Mar 2021	Received NABL approval to our Clinical path lab
USFDA	Jan 2020	No 483, Received EIR
CDSCO	Dec 2019	Inspected both Clinical and analytical facilities. Received renewal approvals
USFDA	Apr 2019	No 483, Received EIR
WHO	Mar 2019	No Critical Observations - Published in WHO website
USFDA	Jan 2018	One 483 - Received EIR. Product approved
CDSCO	Jul 2017	Facility Approval - Bioanalytical
USFDA	Jun 2017	No 483- Received EIR
CDSCO	Oct 2016	Facility Approval - Clinical
CDSCO	Apr 2016	Facility Approval - Bioanalytical
CDSCO	Apr 2015	Facility Approval - Bioanalytical
Multiple Sponsors (>60)	2015 to till date	Pre-Qualifications

Thank You



Email
bd@jeevanscientific.com



Phone
+91 40 6736 4700



[linkedin.com/in/jeevan-scientific-technology-limited-83591696](https://www.linkedin.com/in/jeevan-scientific-technology-limited-83591696)



www.jeevanscientific.com/